



INTRODUCTION TO SUSTAINABLE DEVELOPMENT

STH 200 | 02
SPRING 2022

COURSE SYLLABUS

INSTRUCTOR:
Dr. Chantell LaPan
cmlapan@uncg.edu
Bryan 472

OFFICE/STUDENT
HOURS:
held virtually Mondays
9:00 - 11:00 AM (or by
appointment)



COURSE DESCRIPTION

Explores the social, environmental, and economic dimensions of sustainable development; introduces sustainable development concepts and challenges; prepares students for the application of these concepts in functional business contexts.

Course Format: Online,
Asynchronous
Prerequisites: None

Course website:

<https://uncg.instructure.com/courses/101953>



IN THIS SYLLABUS:

- ➔ **STUDENT LEARNING OUTCOMES** p. 3
- ➔ **COURSE POLICIES** p. 4
- ➔ **CLASSROOM EXPECTATIONS** p. 6
- ➔ **COURSE COMMUNICATION** p. 7
- ➔ **GRADING** p. 8
- ➔ **ASSIGNMENTS** p. 9
- ➔ **CLASS SCHEDULE** p.11

STUDENT LEARNING OUTCOMES

Upon successful completion of this course students will be able to:

1. **Articulate** concepts, definitions, purpose, history, and theories of sustainable development.
2. **Identify** major stakeholders and institutions that drive change toward sustainable development.
3. **Discuss** how values, beliefs, norms, behavior, perceptions, and knowledge impact development
4. **Discuss** sustainable development as a local to global issue.
5. **Apply** sustainable business solutions to address emerging social, environmental and economic challenges
6. **Describe** dynamic elements of different cultures. These elements may include (but are not limited to) aesthetic systems, communication systems, economics, physical environments, ethics, gender norms, geography, history, politics, religious principles, or social beliefs, norms and practices. (MAC Global and Intercultural)
7. **Explain** how similarities, differences, and connections among different groups of people or environmental systems affect one another over time and place. (MAC Global and Intercultural)



BRYAN SCHOOL OF BUSINESS AND ECONOMICS' STUDENT LEARNING GOALS

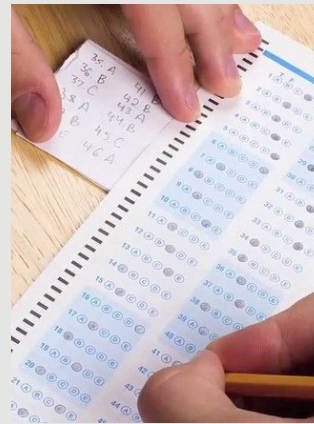
- Each program within the Bryan School has separate learning goals as listed with the degree program. The essential components of a professional education in business (excluding B.A. in Economics and the B.S. in Consumer, Apparel, and Retail Studies) include common courses for breadth and opportunities for advanced work which provide knowledge depth in the various business disciplines. Please see the link below for the complete list of Bryan School Learning Goals and our Mission Statement: <https://catalog.uncg.edu/business-economics/>

This course specifically covers the following Bryan School Learning Goals:

- B3. Students will evaluate business decisions in the context of sustainability goals, balancing environmental, social, and economic needs, conditions, and potential decision impacts.
- B4. Students will formulate appropriate strategies, in the context of global issues and forces, to improve business performance in the world economy.

ACADEMIC INTEGRITY

- By submitting an assignment, each student is acknowledging their understanding and commitment to the Academic Integrity Policy on all major work for the course. Refer to the following URL: <https://osrr.uncg.edu/academic-integrity/>
- Violations of academic integrity include cheating, plagiarism, misuse of academic resources, falsification, and facilitating academic dishonesty.
- Sanctions may include a reduction of grade, educational resolutions, suspension, and expulsion.
- I take academic integrity very seriously. **You are responsible for the academic integrity of any paper, project, or assignment that has your name attached to it (including group work).**



HEALTH AND WELLNESS

- Your health impacts your learning. Throughout your time in college, you may experience a range of health issues that can cause barriers to your learning. These might include physical ailments, illnesses, strained relationships, anxiety, high levels of stress, alcohol/drug problems, feeling down, or loss of motivation. Student Health Services and The Counseling Center can help with these or other issues you may be experiencing.
- You can learn about the free, confidential mental health services available on campus by calling 336-334-5874, visiting the website at <https://shs.uncg.edu/> or visiting the Anna M. Gove Student Health Center at 107 Gray Drive. Help is always available.
- For undergraduate or graduate students in recovery from alcohol and other drug addiction, The Spartan Recovery Program (SRP) offers recovery support services. You can learn more about recovery and recovery support services by visiting <https://shs.uncg.edu/srp> or reaching out to recovery@uncg.edu.



ACCOMMODATIONS

- UNCG seeks to comply fully with the Americans with Disabilities Act (ADA).
- Students requesting accommodations based on a disability must connect with the Office of Accessibility Resources and Services (OARS) in 215 Elliott University Center, (336)334-5440, oars.uncg.edu.
- If you have needs related to a qualified or certified disability, please notify the instructor by the end of the second week of classes so that the appropriate accommodations can be made.



EQUAL OPPORTUNITY IN EDUCATION



- UNCG is committed to equal access to programs, facilities, and employment for all persons. It is the policy of the University to maintain an environment free of harassment and free of discrimination against any person because of age, race, color, ancestry, national origin, religion, creed, service in the uniformed services (as defined in state and federal law), veteran status, sex, sexual orientation, marital or family status, pregnancy, pregnancy-related conditions, physical or mental disability, gender, perceived gender, gender identity, genetic information or political ideas.
- Discriminatory conduct and harassment, as well as sexual misconduct and relationship violence, violates the dignity of individuals, impedes the realization of the University's educational mission, and will not be tolerated.
- For more information, visit https://hrs.uncg.edu/Affirmative_Action/

RELIGIOUS OBSERVATION

- It is UNCG policy that instructors make reasonable accommodations for students who have conflicts due to religious obligations. Please make arrangements with the instructor in advance of any conflict. For more information on UNCG's Religious Obligations policy, visit: <https://catalog.uncg.edu/academic-regulations-policies/university-policies/>



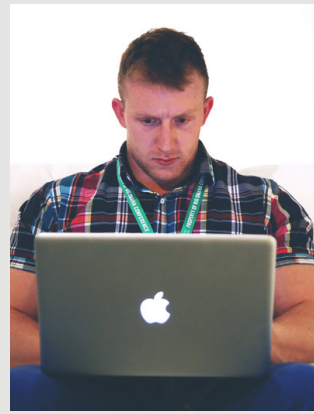
ATTENDANCE/PARTICIPATION



- Regular class attendance is a responsibility and a privilege of university education. It is fundamental to the orderly acquisition of knowledge. Students should familiarize themselves with the university attendance policy: <https://catalog.uncg.edu/academic-regulations-policies/university-policies/>
- As this is an asynchronous online course, you are expected to log into Canvas regularly, review all provided material, and participate in all assignments.
- Students with university-related or requested absences (e.g., field trips in other courses, athletic events, or multiple exams during finals week) must make prior arrangements in advance for any conflicts with their schedule and due dates for the course.

REQUIRED COURSE MATERIALS

- There is no required text for purchase.
- As this course is held exclusively online, students should have a well-functioning **personal computer or laptop** with word processing and access to reliable high-speed internet. This course cannot successfully be completed on a mobile device.
- Class discussions will use the **Packback** online platform for discussions. Packback requires a paid subscription of \$29 per course per semester. You will receive instructions with how to sign up on the first day of class. Packback offers a number of need-based scholarships each semester for free access. You may fill out a request [here](#) if you think you may qualify.



BEHAVIOR & ETIQUETTE

- Faculty and students are expected to adhere to the [Guidelines for Ethical and Professional Behavior of Students and Faculty](#).
- Students should also:
 - Be respectful (of each other and the instructor).
 - Complete work in a timely manner.
 - Be tolerant of differences of opinions.
 - Refrain from the use of inflammatory or hurtful language.
 - Not post links to suspicious websites.
 - Not use the online classroom as a place to promote your business or sell a product.
 - Follow regularly accepted rules of grammar (i.e., no abbreviated or “text speak”) for all online communication.



COURSE TECHNICAL GUIDELINES

- Students having difficulties accessing any of the course content should contact the instructor.
- Students experiencing technical issues with the Canvas course site, email, or other university software should contact **6TECH** for support (either by email, phone, or chat). Please visit <https://its.uncg.edu/Help/6TECH/> for more information.
- If you have any questions or concerns about **Packback** throughout the semester, please read their FAQ at help.packback.co. If you need more help, contact their customer support team directly at help@packback.co.
- As mentioned above, students should have access to desktop or laptop computer and reliable high speed internet for the duration of the semester.





COURSE COMMUNICATION

- This class will be taught fully online, therefore web-based communication will be the cornerstone of the course.
 - Messages will most often come through Canvas (either as an announcement or via Canvas Inbox).
 - Emails may also be sent to your UNCG email address.
 - You are responsible for checking both the course website and your UNCG email account multiple times per week for course information.
 - **Please make sure you have your Canvas notifications turned on so you receive all messages.**
 - Messages to me should include a subject, greeting, my name with title (Dr. LaPan), your name, and the course section. **Emails lacking all pertinent information will result in delayed responses.**
- Questions that are relevant to the course should be posted to the "Ask the Instructor" forum in Canvas.
- Questions of a personal nature can be sent to me via email (cmlapan@uncg.edu).



OFFICE HOURS

- I will hold virtual office hours for students on Mondays from 9:00-11:00 AM.
 - Students should use the [calendar](#) function in Canvas to sign up for a time slot by the previous Sunday at 11:59PM.
 - I will then send you a personalized Zoom link for the meeting.
 - I will always be available to meet during that time. If you need to schedule a session that falls outside of my regular office hours, I will try to accommodate those requests.



GROUP PROJECT*

- Each student **must** work in a team to complete the Sustainability Issues Group project. The teamwork requirement is a key component of the course.
- An integral part of the project is learning how to communicate with your team, therefore you are responsible for indicating your preferred method of contact in the Contact information posts at the beginning of the semester and making sure you are in regular contact with your teammates throughout the duration of the course.



GRADES

ASSIGNMENT GRADING

Grades will be based on weighted percentages. Please note that Canvas can be used as a tool to monitor grading, but ultimately all calculations will follow the scheme below. Therefore, your grade will change in Canvas many times throughout the semester as new grades are entered and percentages adjust.

Here is how each assignment will contribute to your final grade:

Sustainability Issues Project:	35%
Weekly discussion forums:	30%
Weekly quizzes:	20%
Final Exam:	15%
Total:	100%

GRADING SYSTEM

A	94.00 – 100.00	C	73.00 – 76.99
A-	90.00 – 93.99	C-	70.00 – 72.99
B+	87.00 – 89.99	D+	67.00 – 69.99
B	83.00 – 86.99	D	63.00 – 66.99
B-	80.00 – 82.99	D-	60.00 – 62.99
C+	77.00 – 79.99	F	≤ 59.99

- Grades are a weighted percentage of your graded coursework and **final grades are non-negotiable**. Requests for grade "bumps" or rounding up will not be entertained. For example, if your final grade is 89.98, you will receive a B+.

Grade	Rating
A	Outstanding
B	Above average
C	Average
D	Below average
F	Failing



ASSIGNMENTS

SUSTAINABILITY ISSUES PROJECT



- This is the main assignment for this course.
- Students **must** work in groups (course requirement).
- Students will select a key issue related to sustainability and research it in depth.
- All assignments will be collected/submitted via Canvas. **Assignments will not be accepted outside Canvas**, so be sure to allow yourself enough time before the deadline to upload. Emailed assignments will not be accepted.
- **Late assignments for the group project will NOT be accepted.** No discounted grades or percentages will be assigned to late submissions. Early submissions will be accepted anytime.
- Additional detail will be provided in a separate document at the beginning of the semester.
- The Sustainability Issues Project is worth 35% of your grade, but is broken down into smaller pieces that include both individually graded (15%) and group components (20%).

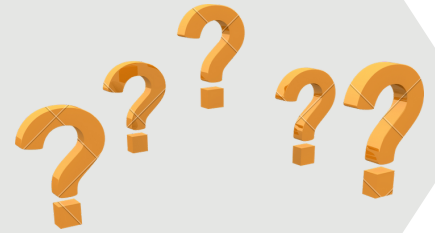
WEEKLY DISCUSSION FORUMS - PACKBACK

- Each week you will be asked to post to an online discussion forum via [Packback](#).
- The weekly deadline for submissions is Sunday at 11:59PM EST. In order to receive full credit, you should submit the following per deadline period:
 - **1 open-ended Question** every week with a minimum Curiosity Score of 50 worth 6 points. Half credit will be provided for questions and responses that do not meet the minimum curiosity score.
 - **2 Responses** every week worth 2 points each. Responses are not required to have a minimum Curiosity Score, but should be engaged with the content posted by your classmates.
- Please be respectful of each other (see Classroom Expectations above) as we engage in thoughtful discussion around a variety of topics.
- The discussion forums are worth 30% of your grade.
- I reserve the right to override Packback scores if I deem appropriate.



WEEKLY QUIZZES

- Weekly quizzes are designed to help students stay on track with readings and lecture material and prepare for the Final Exam.
- The format for the quizzes will generally include multiple choice, matching, and true/false questions.
- The quizzes consist of 5 questions and are worth 20 points each.
- The quizzes are worth 20% of your overall grade.



FINAL EXAM

QUESTIONS

1- A B C D

2- A B C D

3- A B C D

4- A B C D

5- A B C D

6- A B C D

- The Final Exam will follow a similar format as the quizzes.
- It is cumulative and will cover material from the entire semester, including material that was not covered on the quizzes.
- The exam will take place online via Canvas during the final exam period.
- The Final Exam is worth 15% of your grade.

LATE ASSIGNMENTS

- **I do not accept late assignments.** Therefore, I will not assign partial credit or deduct points for late assignments.
- Instead, everyone will get two “life happens” passes during the semester.
- I will drop your lowest quiz and discussion forum grades (one of each) at the end of the semester (including a “0” for not completing an assignment).
- If you encounter an extreme extenuating personal circumstance (e.g., a serious medical condition or family emergency) that may affect more than a couple of assignments, please reach out to me ASAP so we can get you the proper support and develop an appropriate strategy for making up work.
- The assignment forgiveness does not apply to the Sustainability Issues Project or the Final Exam. It is not fair to your group members for you to complete work late and the inclusion of peer reviews for group work does not make this logistically possible. **Therefore, assignment forgiveness will never be awarded for group work or the Final Exam.**

CLASS SCHEDULE

Refer to the official **Spring 2022 UNCG Academic Calendar** for important dates and deadlines:

<https://reg.uncg.edu/calendars/spring-2022-academic-calendar/>

- It is expected that you will spend approximately 4-6 hours per week devoted to this course (depending on your personal work style).
- This will include viewing online lectures, completing course readings and assignments, participating in discussion forums, and working on your group project.
- While the lecture content will be presented in an asynchronous manner, you should be prepared to also set aside time to meet with your group regularly each week to work on the project.



TENTATIVE COURSE SCHEDULE *

*See [course website](#) for additional details

Week 1 (1/10)	Course introduction	Week 9 (3/7)	SPRING BREAK
Week 2 (1/17)	History and models of sustainability	Week 10 (3/14)	Poverty & inequality
Week 3 (1/24)	Overview of environmental sustainability	Week 11 (3/21)	Sociocultural challenges
Week 4 (1/31)	Pollution & waste	Week 12 (3/28)	Aesthetics
Week 5 (2/7)	Sustainable energy, food, & agriculture	Week 13 (4/4)	Documentaries: Economic & Environmental Sustainability
Week 6 (2/14)	Overview of economic sustainability	Week 14 (4/11)	Documentaries: Economic & Sociocultural Sustainability
Week 7 (2/21)	Consumption, production, & sustainable economic growth	Week 15 (4/18)	Documentaries: Environmental & Sociocultural Sustainability
Week 8 (2/28)	Overview of sociocultural sustainability	Week 16 (4/25)	Opportunities for the future
Final Exam Period Friday, 4/29- Monday, 5/2			